



Petersberg Erfurt - a cultural monument in change.

New passageways to the once closed area.

FORTE CULTURA

Capitalising of fortified heritage for sustainable development and competitiveness of cities and regions



This project is implemented through the CENTRAL EUROPE Programme co-financed by the ERDF.



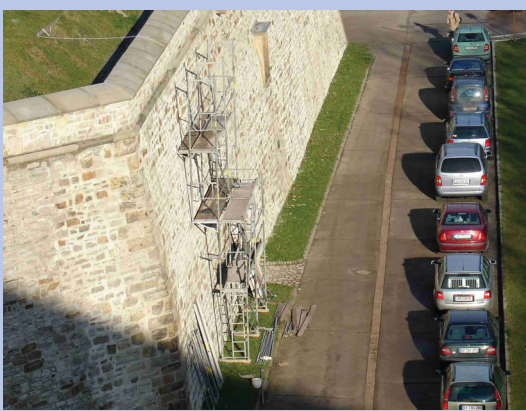
1) From Andreasstraße To Bastion Franz



December 2005. Access way to citadel from Andreasstraße - restoration of the der stairways (2005-2008).



September 2008.



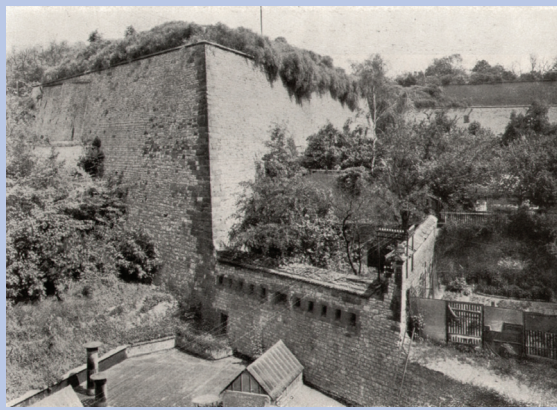
2005. Access to the Bastion Franz emerging.



2008. Finished stairways.

According to one of the key objectives of the urban framework plan, the public accessibility of the Petersberg is further improved.

2) From Lauen- torstrasse To Canon Court Yard Infront Of Bastion Martin



Around 1929. Peak of the Bastion Martin with War Laboratories and Gun Court Yard right ahead.



2006.



2007. A new staircase along Bastion Martin leads to the Canon Court Yard.



September 2007. The new staircase also leads to the underground passageways of the Bastion.



September 2010.

3) Bus Terminal Loop Western Petersbergstrasse

The urban master plan anticipates a significant increase in tourist use of the Petersberg. In particular, more bus passengers are expected. About the Western Petersbergstrasse the buses can take up to Bastion Gabriel. A permanent parking is not provided, as this area is to be regarded as an important "entrée" of the fortress.



December 2005.



August 2010.



September 2007.



November 2009. Surroundings shaping in the bus terminal loop area.



August 2010. Finished bus terminal loop with toilet facilities.

4) From Gutenbergplatz To Bastion Michael



2007.

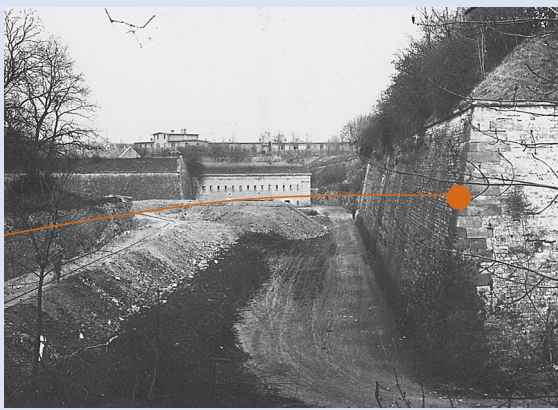


February 2009.



September 2010.

According to urban specifications the Petersberg is to be reached by pedestrians much more easily from the surrounding neighborhoods. These paths can then open up a wide area of potential that has so far been largely removed from the citizens. The new routing between Gutenbergplatz and Bastion Michael further promotes the public flow of the Petersberg.



1914. View along Bastion Michael towards Gun Caponier No. 2. The trench was backfilled later to this foto. The backfilling now stands as the glacis ramp over which one can reach up from the lower-lying Gutenbergplatz almost to the wall crown.



September 2010. The routing between Gutenbergplatz and Bastion Michael is completed by a staircase.



Bilder: Stadtverwaltung Erfurt, Stadtarchiv, Kummer - Lübke - Partner, Ingenieurbüro für Bauforschung und Denkmalpflege, Stadtverwaltung Erfurt, Bauamt, Dr. Horst Moritz, Torsten Böttner, Presseagentur Fakt, Polizeiinspektion Erfurt, Stadtinitiative "Lebendiger Petersberg", Ohle, Max (Hg.): Die Kunstdenkmale der Provinz Sachsen, Band 1, Burg 1929, Brachmann, Hans-Peter (u.a.): Der Erfurter Petersberg, Erfurt 1993, Moritz, Horst: Die Festung Petersberg unter Kurfürst 1664-1802, Erfurt 2001, Stiftung Thüringer Schlösser und Gärten (Hg.): Jahrbuch der Stiftung Thüringer Schlösser und Gärten, Band 7, Rudolstadt 2004
Redaktion: Thüringer Institut für Akademische Weiterbildung e.V., © TIAW Verlag, Februar 2014
Layout und Satz: TIAW Verlag