



FORTE CULTURA

Capitalising of fortified heritage for sustainable development and competitiveness of cities and regions



Petersberg Erfurt - a cultural monument in change.

Searching traces - discovery of vanished buildings.

View To Petersberg From Western Direction



May 1926.



July 1997.

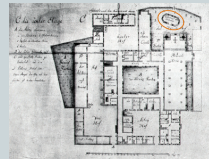


2007.

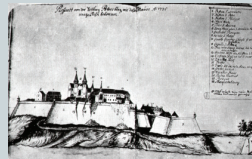
1) Corporis Christi Chapel



View.



Location East of St. Peter Church, close to the wall of Bastion Philipp.



1735. East view of Bastion Philipp with collapse damages.

Caused by the collapse of the Bastion Philipp in 1735 the Corpus Christi Chapel was destroyed.

In 2006 the remains of the Chapel were discovered and temporary uncovered.



June 2006. Uncovering the foundations of Corporis Christi Chapel.



June 2006.

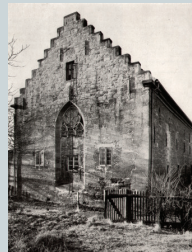
2) Leonhard chapel



Around 1929. North West view.



Around 1929. South view.



Around 1929. East view.



Around 1929. Inventory.

The Leonhard Chapel was built in 1172-1185. In 1290, Gothic rebuilding of the windows have been made to the Roman church. She was a parish church for the people living on the hillside residents.

As in the 17th Century, the Petersberg Citadel was built as a Baroque city fortress, the church was no longer used for church services. It was rebuilt in 1677 to an Armory, where, inter alia, the great Gothic windows were bricked up. The military use was in place until 1945. At that time the building was damaged in an American bombing raid and removed in the same year.

1996 the foundations of the Church were rediscovered and made visible.



2007. Location South of Barracks B.



August 2010. Uncovered foundations of the Leonhard Chapel.

3) Division Headquarters Building



Around 1929. Division Headquarters building close to Curtian Gabriel-Michael. Built in 1914-1915 and blown up by Soviet occupying forces in 1946.



Before 1912.



Around 1929. North view of the Division Headquarters building in front.



September 2010.